

SAP Learning Hub

Transforming SAP Learning

Cary Samulka
SAP Education

Public



SAP Education
Essential for Success.

SAP Learning Hub Trailer 2015



SAP Learning Hub

Secure project success and high ROI

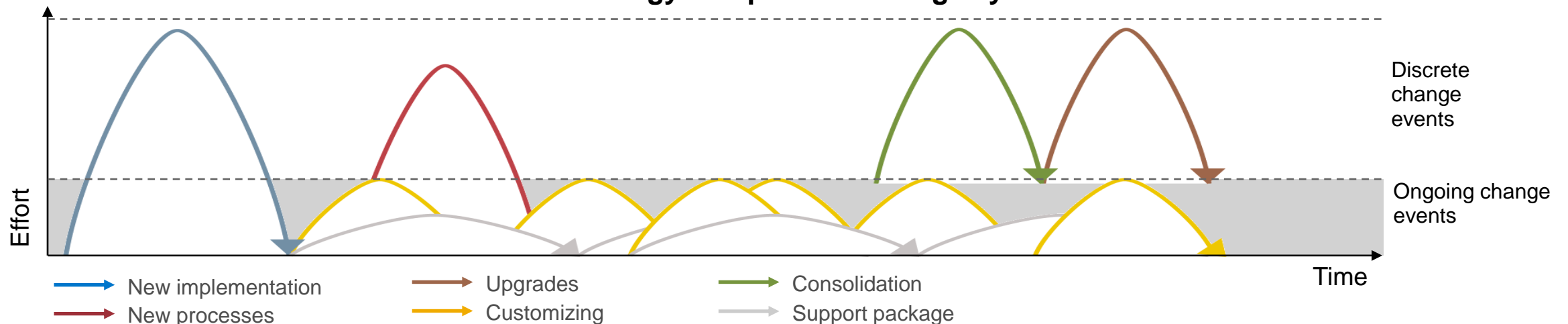
Companies invest in technologies to create new and improve existing processes year-round

Workforce enablement is often forgotten or insufficient to support the enablement requirements

SAP Education provides a new cloud-based enablement platform that helps to secure project success and high ROI

“Technology ROI at risk because of insufficient year-round enablement of the entire workforce”

Continuous technology and process change cycle



SAP Learning Hub

Learning objectives and ambitions

Anytime

available at the point of need; on-demand, year round

Mobile

available via mobile devices

Learner Centric

at the learner's fingertips when the learner requires it

Multi-Modality

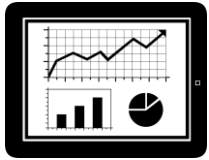
handbooks and multi-media content, training systems for hands-on practice and social learning and collaboration with peers and SAP instructors

Company Specific

customizable to company specific processes and allow for enterprise-wide learning program management

SAP Learning Hub

A cloud-based learning platform for individuals and enterprises



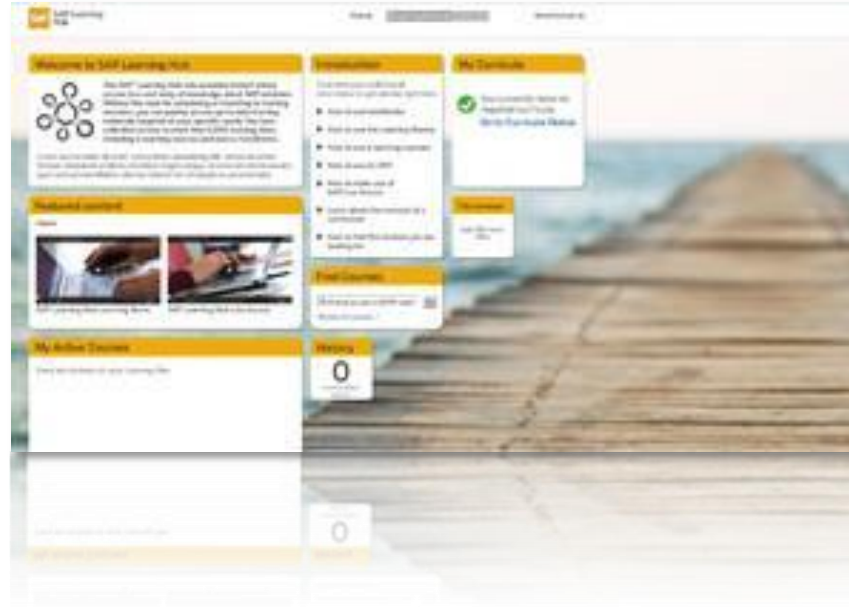
Educational content

Unlimited access to all of SAP's learning content, including role-based learning and certification paths



Social learning and learning rooms

Structured collaboration and social learning lead by experts from SAP



Live system access

Exclusive purchase option for on-demand access to live training systems



Learning management system

Powerful learning management capabilities to manage enterprise enablement programs

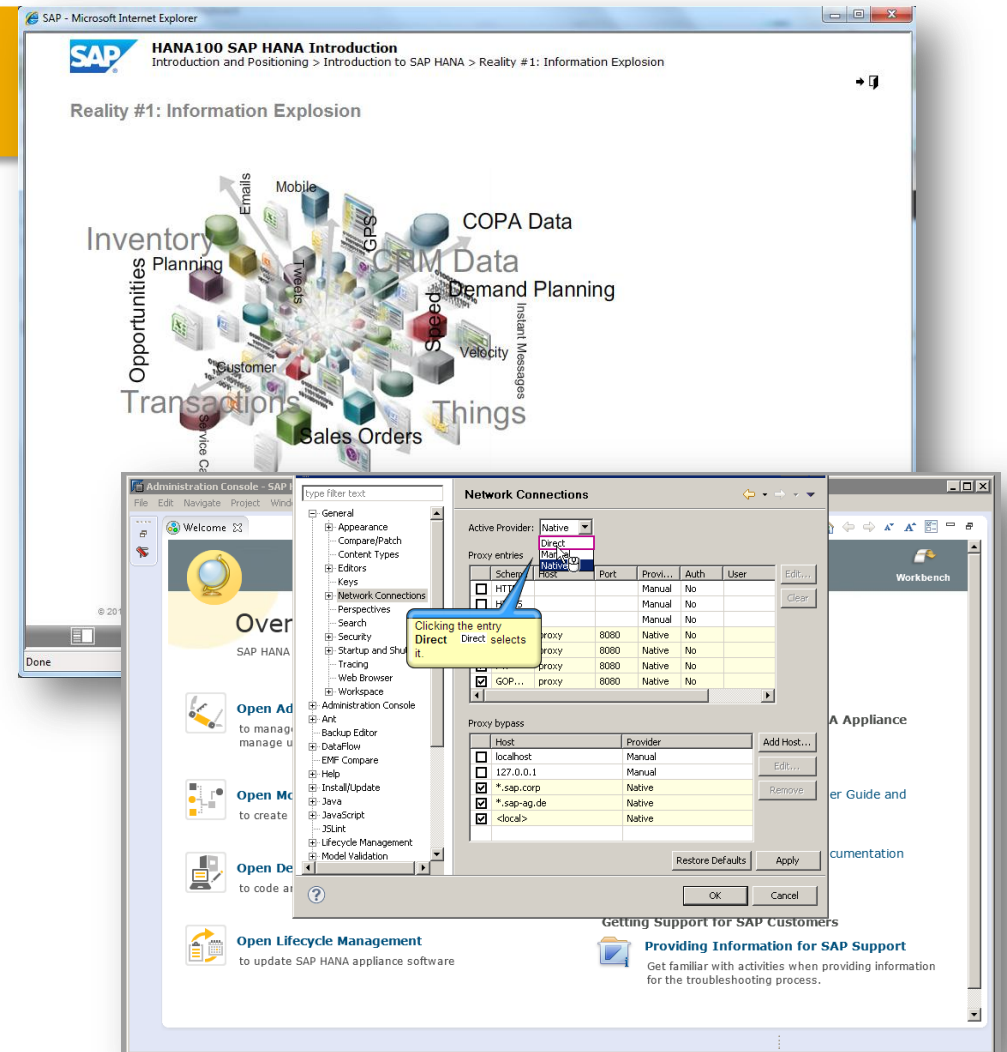
Unlimited access for one subscription price

SAP Learning Hub



Content

- ▶ >4,000 learning titles
 - ▶ Handbooks, incl. documented exercises and solutions
 - ▶ e-learning titles, incl. recorded and interactive system simulations
- ▶ SAP Education and non-Education content (e.g. SAP TechEd)
- ▶ Covering SAP applications, technology and industries topics
- ▶ Available in multiple languages
- ▶ From overview content to very detailed and technical knowledge
- ▶ Always up to date, but also previous release content available
- ▶ Clear learning and certification paths



SAP Learning Hub



Learning Rooms

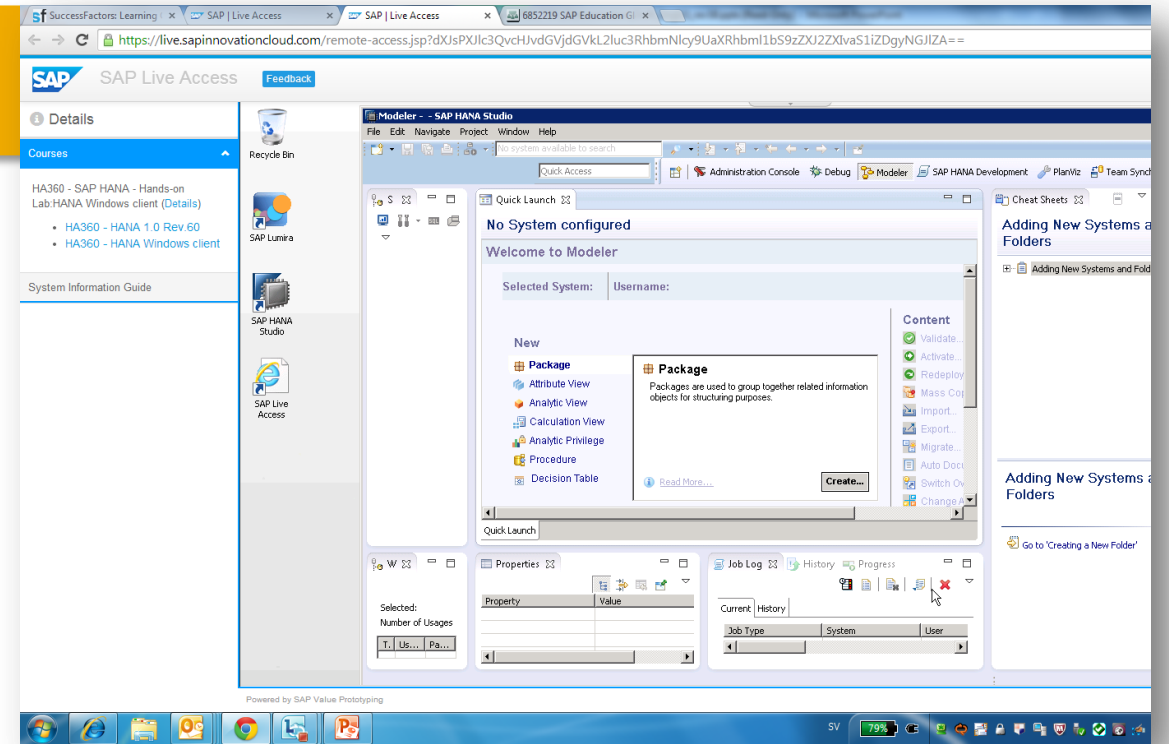
- ▶ Learning Room characteristics:
 - ▶ virtual spaces on social media platform SAP Jam for learning groups, where learners can collaborate and develop their knowledge and skills
 - ▶ structured and moderated by SAP trainers to support defined learning objectives
 - ▶ offer experiential learning scenarios
 - ▶ support lifelong learning far beyond the initial training phase
 - ▶ allow learners to get in direct contact and interaction with trainers and other learners; to collaborate and network
 - ▶ allow for synchronous (chat, application sharing) and asynchronous (discussions, feeds, documents) collaboration

SAP Learning Hub



Live System Access

- ▶ SAP Learning Hub subscribers have exclusive right to purchase training system access
- ▶ Access can be purchased on-demand in blocks of 20, 40 or 60 hrs.
- ▶ Access is individual: 1 learner : 1 system
- ▶ Systems support documented exercises in course handbooks, but also free system exploration



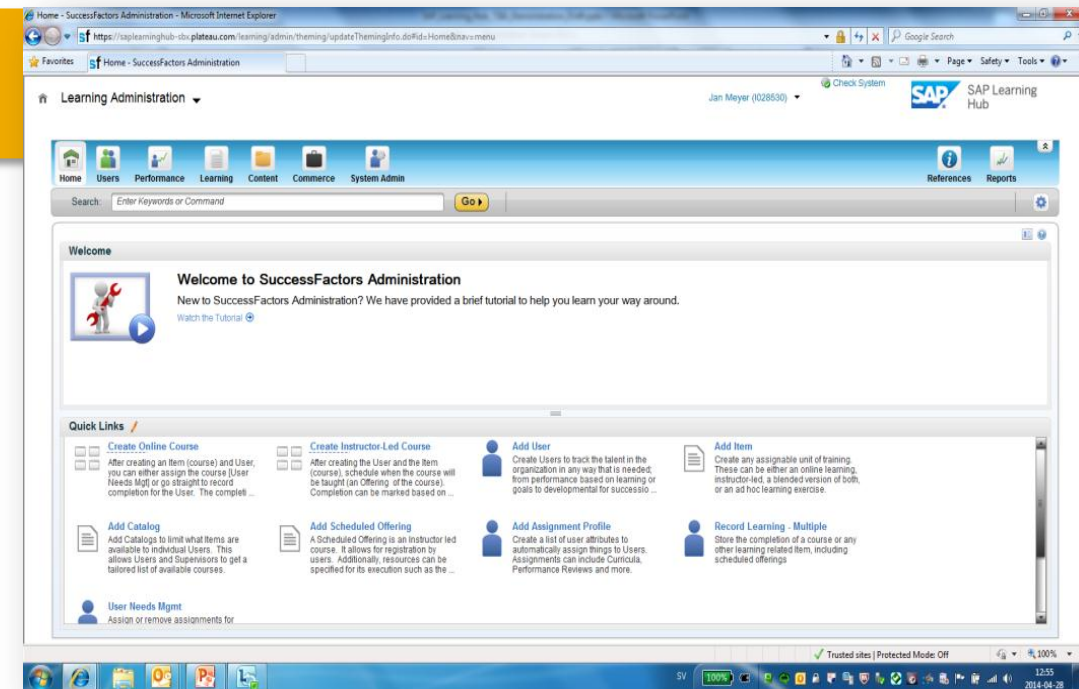
SAP Learning Hub

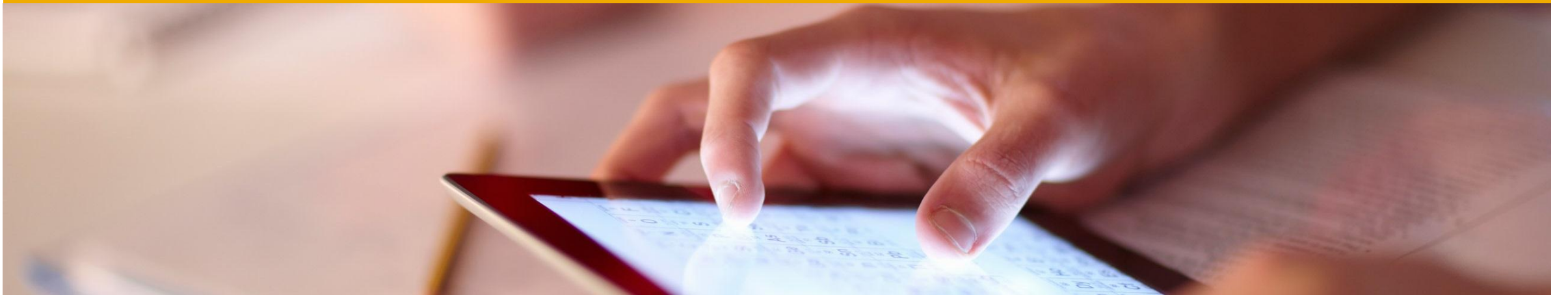


Powerful Learning Management System capabilities

- ▶ Personal learning history and completion certificates
- ▶ Extensive reporting capabilities*
- ▶ Upload own content*
- ▶ Create own curricula, incl. SAP and non-SAP content*
- ▶ Assign courses and curricula to learners or groups of learners, incl. completion dates*
- ▶ User and role management*
- ▶ Customer specific / own learning rooms*

* enterprise edition only





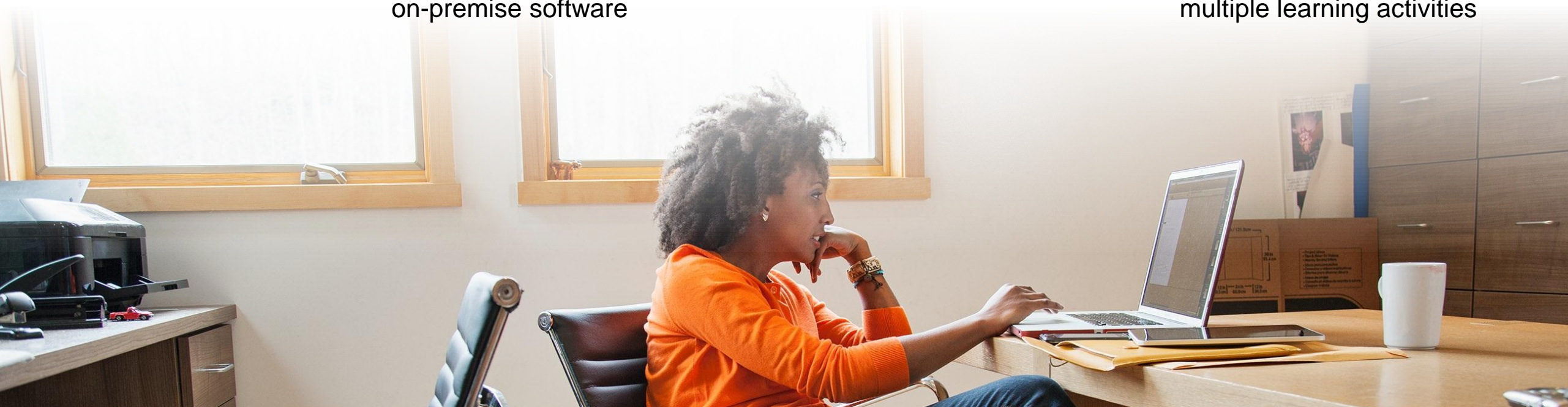
SAP Learning Hub, User Adoption Edition: An Overview

SAP Learning Hub, user adoption edition

Helping you run your learning programs more simply

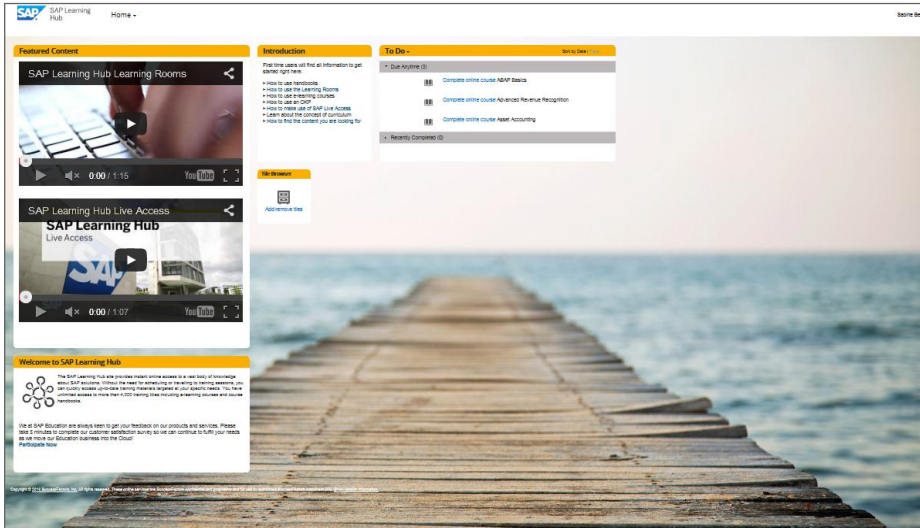
SAP Learning Hub helps you run simpler by providing comprehensive learning management support in a single solution. It offers:

- Quicker and easier deployment
- Everything available in the cloud – no need for time-consuming installation and maintenance of on-premise software
- Unlimited access to content and tools for a single subscription fee
- A preconfigured, integrated, and hosted tool landscape to help you enable and manage multiple learning activities



SAP Learning Hub, user adoption edition

An SAP-run tool and content service for year-round user enablement



Customer content

Create and share your own content quickly and easily, both during projects and year-round



In-application guidance

Provide on-the-job, real-time guidance within the application



Powerful learning management system capabilities

Upload your own content, create and assign curricula, and track progress



Reporting

Monitor learning progress with advanced reporting tools



Social learning

Support enterprise-wide knowledge sharing, led by key users



Content from SAP

Offer unlimited access to learning content that is relevant for users

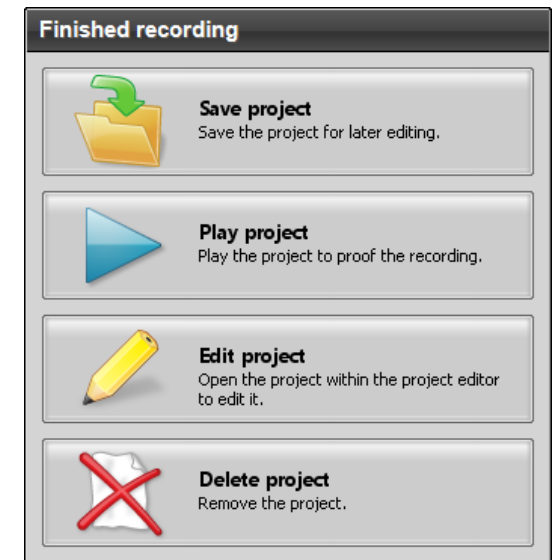
Unlimited access for ONE subscription price



Customer content

Produce tailor-made training courses by creating your own content

- Use the instant producer option of SAP Workforce Performance Builder software (usage rights are included in the user adoption edition subscription)
- Quickly and easily create simulations, documents, and videos
- Simply add them to your own catalog within SAP Learning Hub using an uploading service from SAP





Content from SAP

Gain unlimited access to a wealth of ready-made standard training materials from SAP that are relevant for key users and end users

These include

- Navigation and overview courses
- End-user process and transaction courses
- Simulations of standard transactions within SAP solutions



Use the content library from SAP

- Self-study training courses tailored for user enablement
- Huge library of simulations for ad hoc transaction support and self-paced practice
- Wide range of SAP solution coverage, from classical ERP to cloud solutions
- Content available in up to 10 languages

Content factory services

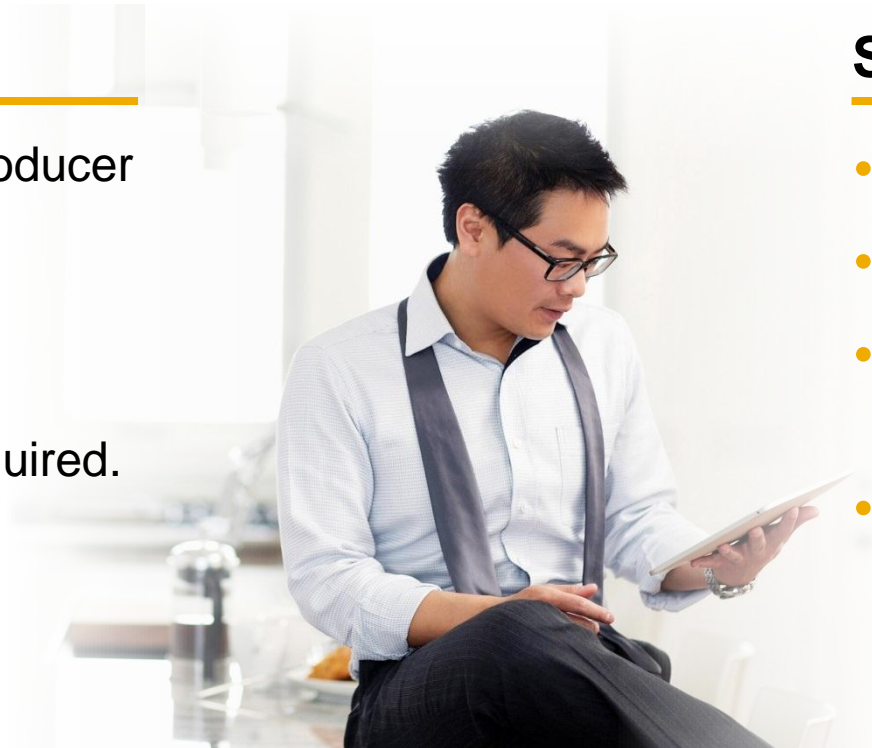
As an additional service, content factory services are available for an additional cost.

The process is as follows

- Customers create content using the instant producer option of SAP Workforce Performance Builder.
- They then upload a limited number of raw recordings to a central store.
- An SAP partner customizes the content as required.
- The partner uploads the finished content into SAP Learning Hub for access by users.

Services include

- Copyediting
- Script-writing
- Creation of simulations
- Professional voice-over





In-application guidance

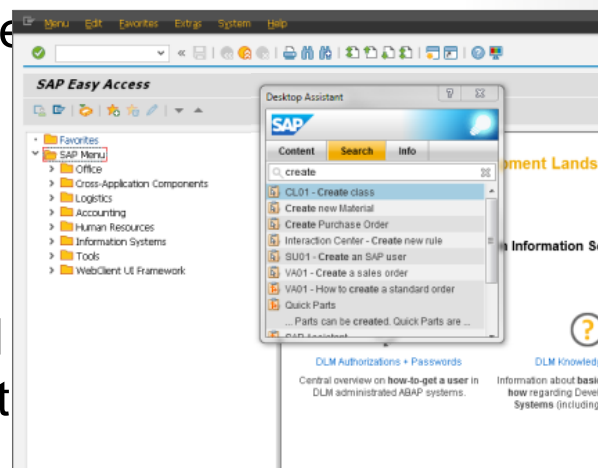
Provide customer content directly where it is needed – at the user's fingertips.

The navigator option of SAP Workforce Performance Builder* helps you provide relevant, in-application guidance to users by:

- Displaying an “assistant” menu while people are in applications
- Recognizing what the user is currently doing in the application
- Offering relevant information, such as SAP and non-SAP training content, based on the context

- Supporting users with workflow-related assets as they complete tasks

*Usage rights are included in the user adoption edition subscription.



Role-based learning plan design and assignment

Create targeted learning programs that are relevant to your users.

Training managers can

- Design learning plans that are focused on the needs of key user groups
- Use customer content as well as content from SAP
- Assign and push learning plans to specific users and user groups
- Set due dates for learning plan completion



Users can

- Filter courses by language, delivery type, solution area, and difficulty level
- Book and consume any training material item without additional workflow steps



Learning progress reporting

Manage your training programs effectively with advanced reporting functionality.

Intuitive-to-use, self-service tools enable you to:

- Access numerous preconfigured reports or create your own
- Track progress of users for assigned learning plans





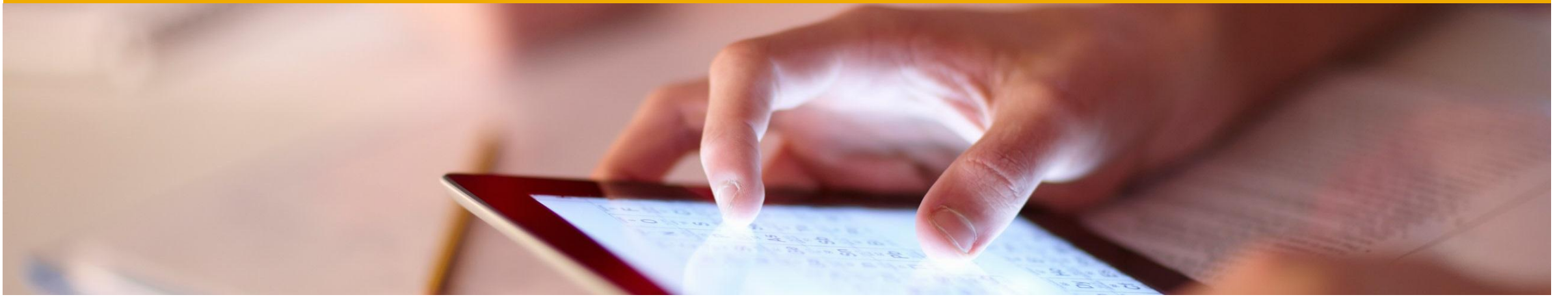
Social learning and knowledge sharing

Maximize users' learning experience with dynamic social learning opportunities – anytime, anywhere.

Using learning room functionality provided by the SAP Jam social software platform, you can:


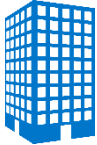
- Support social learning and knowledge sharing
- Provide different learning rooms for specific user groups
- Use best-practice templates from SAP or create your own
- Offer an effective tool to support end users
- Collaborate with your partners to help ensure seamless transitions between different project phases







SAP Learning Hub – Which Edition is Right for You?



SAP® Learning Hub: Which Edition Is Right for You?

Edition	 Customer & Partner	 Enterprise
Target Audience	<ul style="list-style-type: none"> Customers and Partners 	<ul style="list-style-type: none"> Large organizations of 300 or more employees
Pricing	<ul style="list-style-type: none"> Individual pricing starting at €2,500 per year 	<ul style="list-style-type: none"> Tiered pricing starting at €800 per year Minimum of 300 users
Content	<ul style="list-style-type: none"> Contains all global education content covering the full SAP software suite Includes handbooks, e-learning materials, and simulations Supports certification paths 	<ul style="list-style-type: none"> Contains all global education content covering the full SAP software suite Includes handbooks, e-learning materials, and simulations Supports certification paths
Additional Features	<ul style="list-style-type: none"> SAP hosted environment Exclusive purchase option for the SAP Live Access environment Self-service reporting on learning history Access to all public learning rooms 	<ul style="list-style-type: none"> Private cloud hosted by SAP Branding potential Extensive reporting functionalities, including self-service reporting on learning history User management Option to upload content Exclusive purchase option for the SAP® Live Access environment Access to all public learning rooms, plus one private learning room

SAP® Learning Hub: Which Edition Is Right for You?

Edition	 Business User	 User Adoption
Target Audience	<ul style="list-style-type: none"> Individual and corporate end users 	<ul style="list-style-type: none"> Organizations with a large number of end users
Pricing	<ul style="list-style-type: none"> Individual pricing starting at €250 per year 	<ul style="list-style-type: none"> Tiered pricing starting at €350 per year Minimum of 100 users
Content	<ul style="list-style-type: none"> Contains selected end user-specific handbooks, e-learning materials, simulations, and more Includes simulations of the most popular SAP software transactions 	<ul style="list-style-type: none"> Contains selected end user-specific handbooks, e-learning materials, simulations, and more Includes simulations of the most popular SAP software transactions Enables users to create and share their own content quickly
Additional Features	<ul style="list-style-type: none"> SAP hosted environment Exclusive purchase option for the SAP Live Access environment Self-service reporting on learning history Access to specific public learning rooms 	<ul style="list-style-type: none"> Private cloud hosted by SAP Usage rights to tools that allow subscribers to create their own simulations, documents, and videos Timely support for users, with in-application guidance on customer specific content during process execution Extensive reporting functionalities, including self-service reporting on learner history Access to specific online learning rooms Powerful learning management system functionalities Option to subscribe to content factory services such as content localization, creation of quizzes, provision of alternative output formats, and more Exclusive purchase option for the SAP Live Access environment

SAP® Learning Hub: Which Edition Is Right for You?

Edition	 Student	 Discovery
Target Audience	<ul style="list-style-type: none">• Higher education	<ul style="list-style-type: none">• Trial environment for finding out more about SAP Learning Hub
Pricing	<ul style="list-style-type: none">• Individual pricing starting at €250 per year	<ul style="list-style-type: none">• Free
Content	<ul style="list-style-type: none">• Access to online resources in multiple languages specifically aimed at students, including certification role maps	<ul style="list-style-type: none">• Over 120 online resources in multiple languages, including full and partial introductory handbooks and e-learning materials
Additional Features	<ul style="list-style-type: none">• SAP hosted environment• Exclusive purchase option for the SAP Live Access environment• Self-service reporting on learning history• Access to specific public learning rooms	<ul style="list-style-type: none">• Self-service reporting on learning history



What our Customers say...

SAP Learning Hub

What customers say...



"Our workforce is constantly pressing to expand and grow their skills and with SAP Learning Hub they have access to content that helps accomplish this 24/7 from anywhere"



"The validation from SAP Global Certification and SAP Learning Hub sets our workforce on a solid path to success."



*Click and see what **Accenture** thinks!*



*Click and see what **Delaware Consulting** thinks!*



More Customers:

CATERPILLAR

Walmart
Save money. Live better.

BNSF
RAILWAY



COOPER

Infosys

PETROM
Membru OMV Grup

NOVARTIS



Gulfstream
A GENERAL DYNAMICS COMPANY

Reliance
Industries Limited

BOEING

Vestas

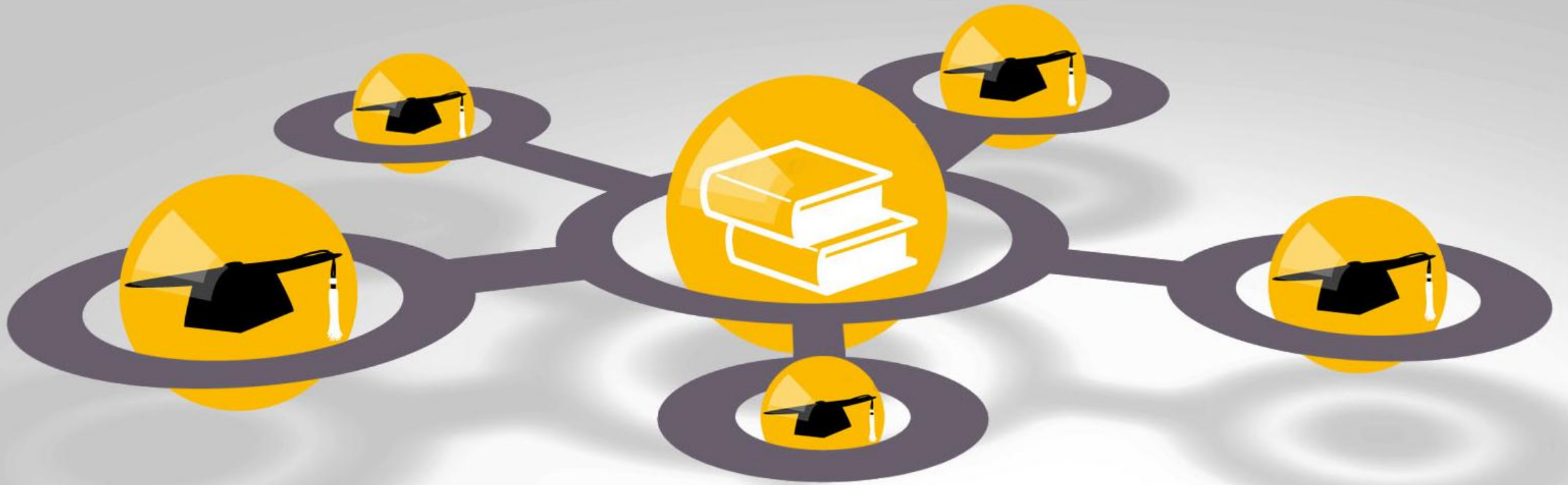
TATA
TATA POWER



AMERICAN RAILCAR INDUSTRIES, INC.



Discover Now! Free of charge (<https://training.sap.com>)



Summary

SAP Learning Hub helps businesses address all changes during their journey to “*run simple.*”



Fast, cost-efficient access to vast learning repository



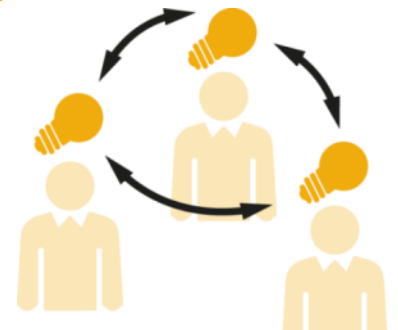
Significant reduction of total cost of change



In-process and in-context guidance for higher productivity as of day one



Maximized adoption and user satisfaction from day one



Social collaboration and easy knowledge sharing



Questions?



Thank you