



A R I B A<sup>®</sup>

An SAP Company

# Lessons Learned - BO Upgrade From XI- R2 to BI Platform 4 SP04 (FP 03)

*Vasudevan Gnanasivam*

June 27<sup>th</sup> 2013



BUY



SELL



MANAGE CASH

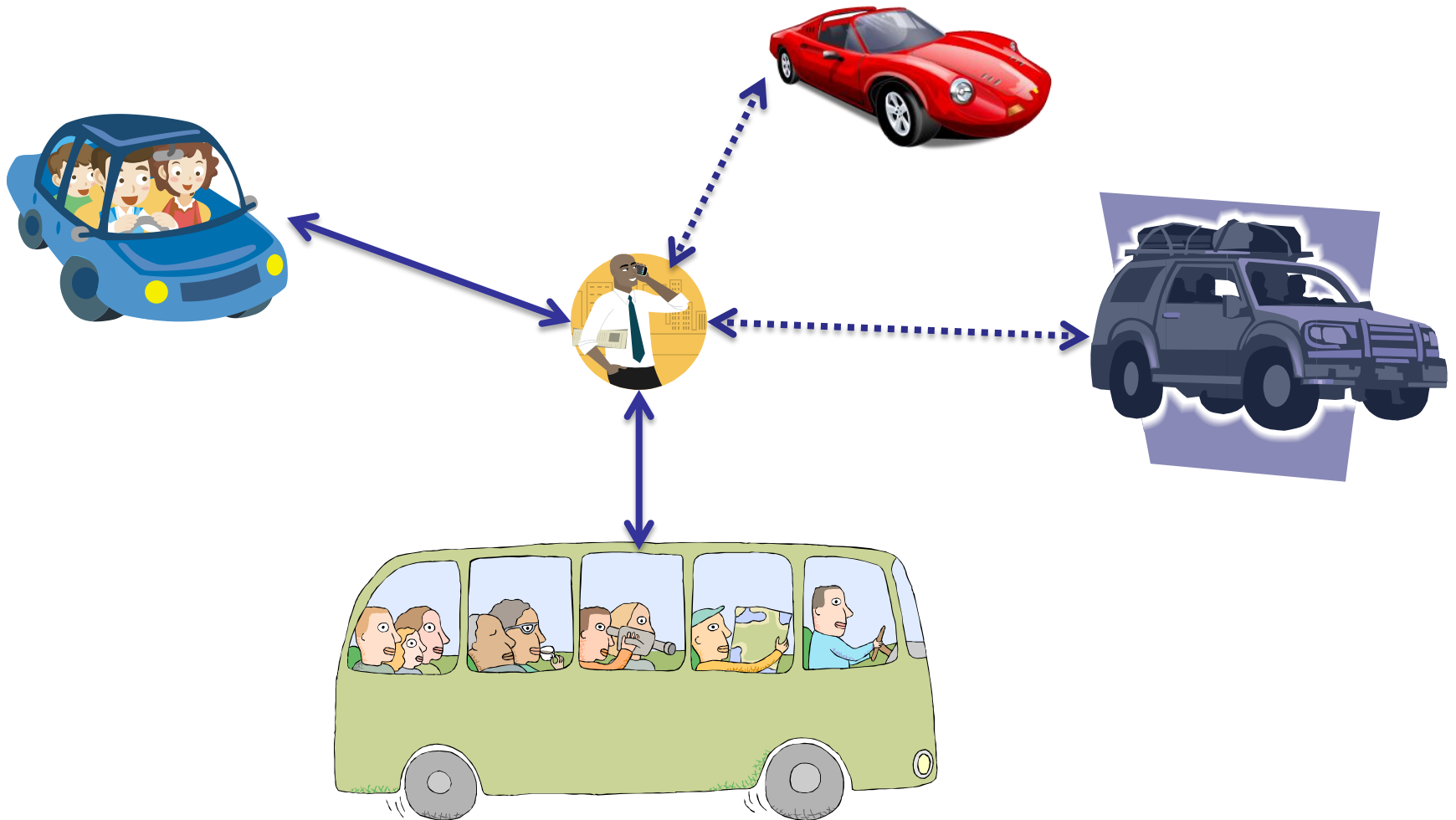
# Agenda

- *Hardware Configuration & Sizing*
- *Upgrade Approach*
- *Preparation for Upgrade*
- *During the upgrade*
- *Post Upgrade issues and list of tickets opened with SAP*

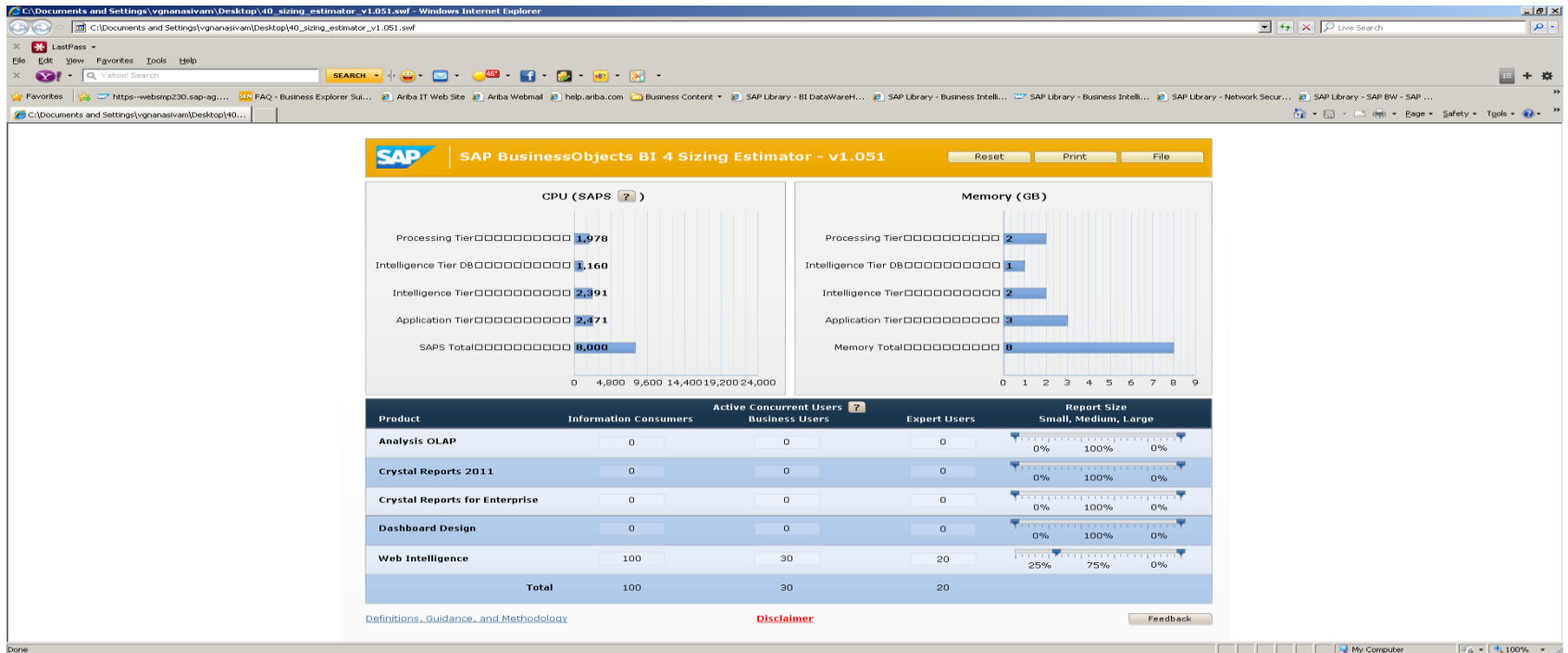
# Background

- **Free Markets → Ariba → SAP**
- **BO Installation since 2005 version 6.5**
  - Mostly WebI reports, started using Explorer and Dashboards
  - No Crystal reports
  - Windows, SQL Server platform
- ◆ 30+ Universes
- ◆ 300+ Users
- ◆ 1000+ daily scheduled reports
- ◆ 20,000+ Objects and growing ...

# Before and After Upgrade

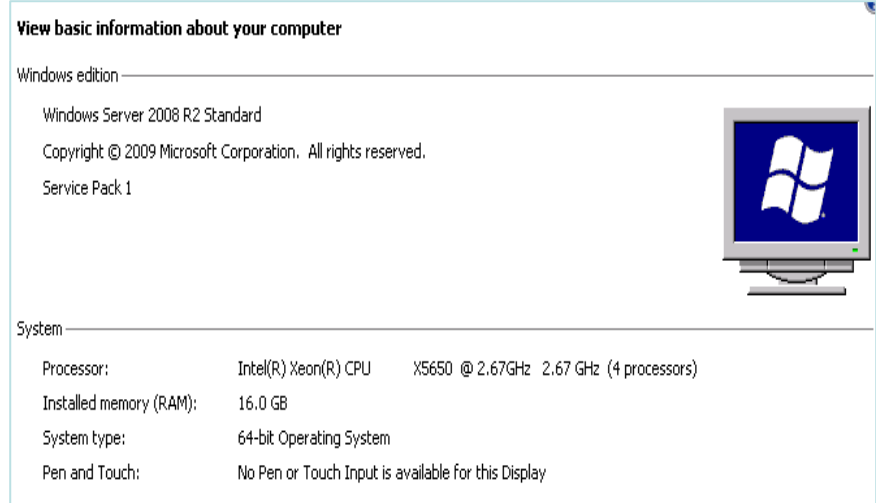
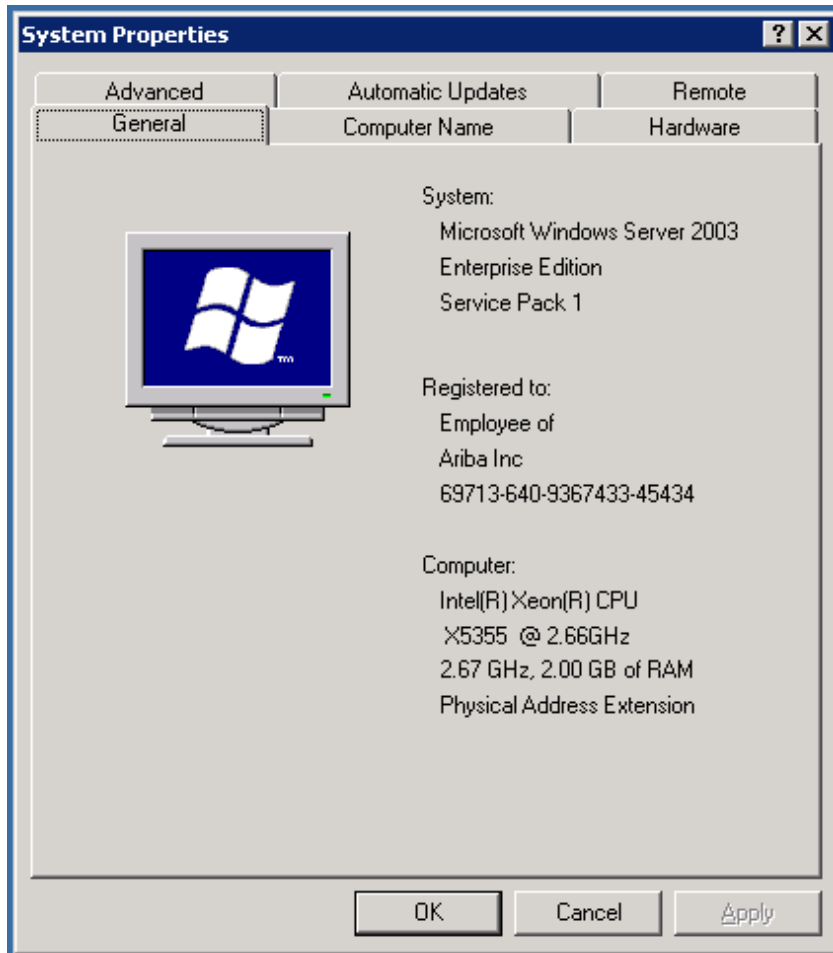


# Sizing using Estimator V1.051

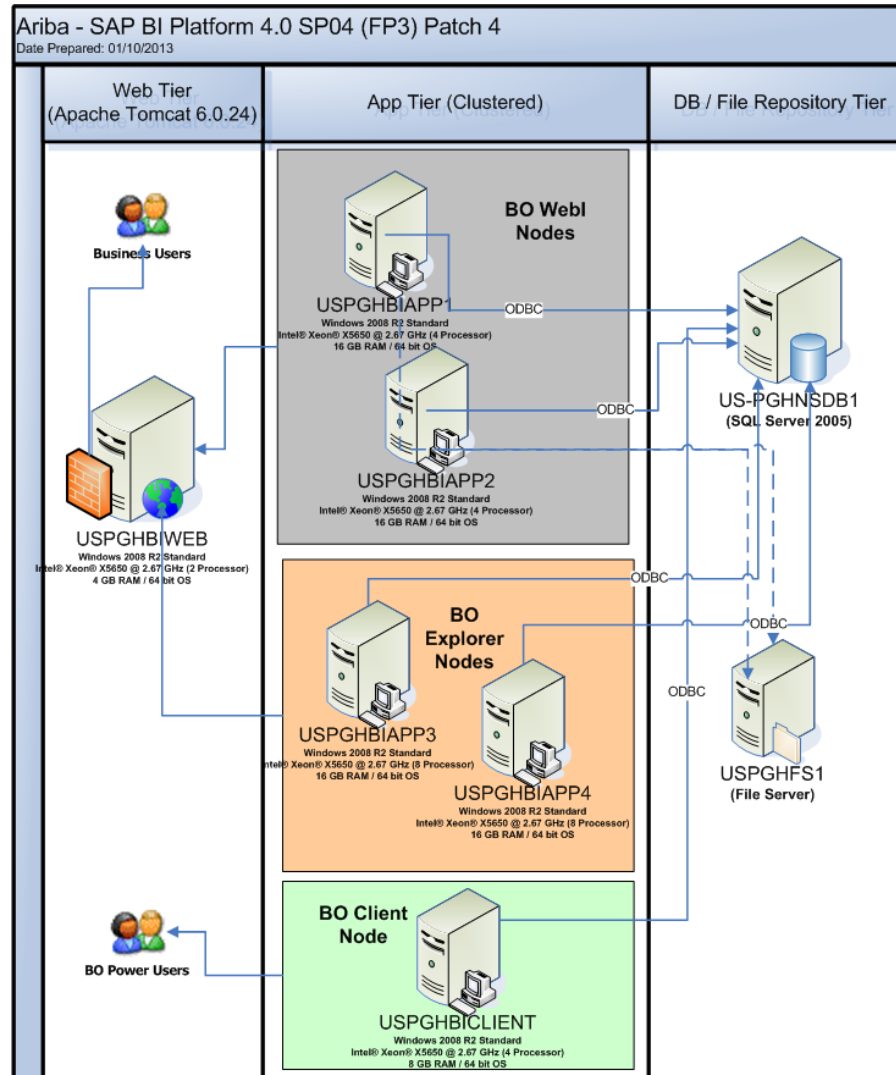


- Double the CPU numbers and Quadruple the RAM

# Comparison XI R2 to BI Platform 4



# Hardware Configuration



# Upgrade Approach

- Incremental approach rather than Big Bang approach.
- Migrate Universes / Objects by department / Functional Area separately
- Setting up the Users and Users groups First on the TARGET environment
- Use UNV version instead of UNX version for Universes
- Use TOMCAT rather than IIS

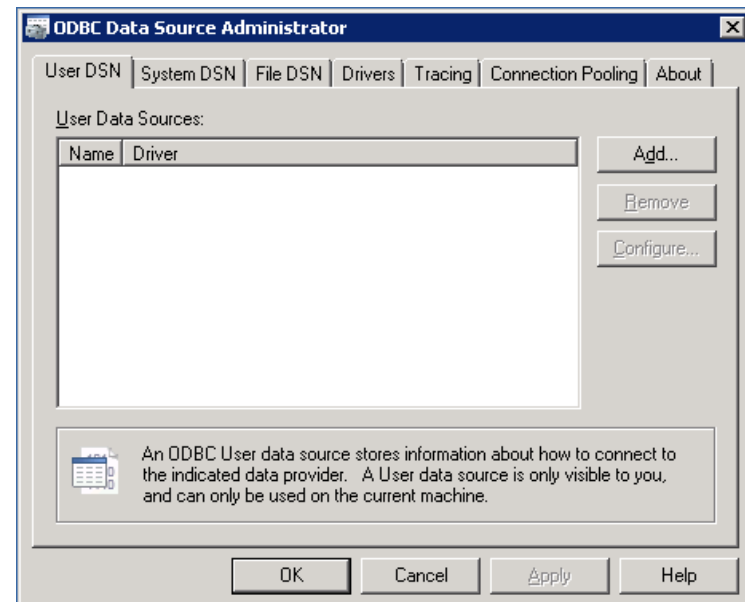
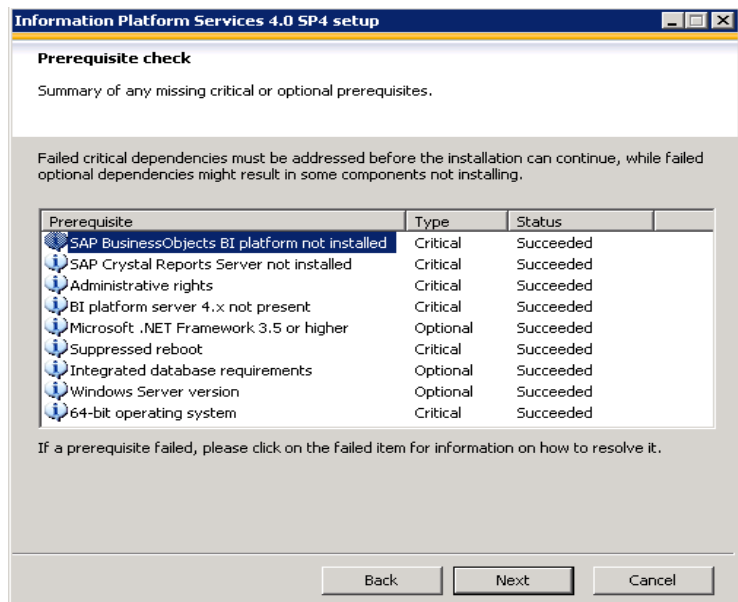


# Preparation for Upgrade

- **Cleanup Voluminous history instances of Reports excluding the report schedules.**
- **Cleanup Unused / Paused Report schedules**
- **Redo the Inventory of Users / User groups / Folders / Universes / Reports**
- **Database connections – ODBC settings**
- **Create BIAR files from XI R2 for each division**

# During the Upgrade

- ◆ Faulty installation due to SQL Server 2000 for CMS at Sandbox.
- ◆ ODBC 32 bit Vs 64 bit conflicts
  - C:\Windows\System32\odbcad32.exe
  - C:\Windows\SysWOW64\odbcad32.exe



# Post Upgrade

- **Missing functionalities**

- ◆ Excel Charts Images
- ◆ Merged Dimensions managements
- ◆ Bar / Line Chart color pallets
- ◆ Title wrapping

- **Usability and Maintenance**

- ◆ Enabling SSL on App servers doesn't work whereas it worked in Web server
- ◆ Single Sign On is flaky
- ◆ Long upgrade timings

# List of Tickets

Short Text	SID	System name	Installation
	(all)	(all)	
<a href="#">Error Opening WebI report</a>	BIP	SAP BI Platform 4 production	0020883184
<a href="#">Unable to Export Universe</a>	BIP	SAP BI Platform 4 production	0020883184
<a href="#">Unable import Report schedules</a>	BI4	BIPLATFORM40 DEV	0020883184
<a href="#">Unable to delete a user</a>	BI4	BIPLATFORM40 DEV	0020883184
<a href="#">Unable select Format option</a>	BI4	BIPLATFORM40 DEV	0020883184
<a href="#">SBOP BI Platform 4.0 is not working ...</a>	BI4	BIPLATFORM40 DEV	0020883184
<a href="#">SBOP BI Platform 4.0 is not working ...</a>	BI4	BIPLATFORM40 DEV	0020883184

Page 2 of 2

# List of Tickets

Short Text	SID	System name	Installation	Installation name
	(all)	(all)		
<a href="#">Merged Dimension editing issues on WebI</a>	BIP	SAP BI Platform 4 production	0020683184	SAP BOBJ T installation
<a href="#">WebI Report Ownername changing</a>	BIP	SAP BI Platform 4 production	0020683184	SAP BOBJ T installation
<a href="#">WebI - Chart Axis title wrapping issue</a>	BIP	SAP BI Platform 4 production	0020683184	SAP BOBJ T installation
<a href="#">FWM 00002 erro after SSL configuration</a>	BIP	SAP BI Platform 4 production	0020683184	SAP BOBJ T installation
<a href="#">Report Publication failed- ERR_WIS_30270</a>	BIP	SAP BI Platform 4 production	0020683184	SAP BOBJ T installation
<a href="#">Scheduled Report Failures RWI 00200</a>	BIP	SAP BI Platform 4 production	0020683184	SAP BOBJ T installation
<a href="#">WebI Formulas are changed after upgrade</a>	BIP	SAP BI Platform 4 production	0020683184	SAP BOBJ T installation
<a href="#">No Bus.layer sent back from server error</a>	BIP	SAP BI Platform 4 production	0020683184	SAP BOBJ T installation
<a href="#">processDPCommandsEx error</a>	BIP	SAP BI Platform 4 production	0020683184	SAP BOBJ T installation
<a href="#">Pause the scheduled WebI report</a>	BIP	SAP BI Platform 4 production	0020683184	SAP BOBJ T installation

Page 1 of 2

# Questions

- **Thank You**

- ◆ Vasu (email: [vgnanasivam@ariba.com](mailto:vgnanasivam@ariba.com))